

* PAINT * WALLPAPER * BLINDS * CURTAINS *
 * DULUX * JACOBSEN * TOOLS & ACCESS
 For all your decorating needs.
 Pop in and see us.
 224 Commerce Street, Kaitaia
 Phone/Fax: 09 408 1741

Kaitaia Primary School is proudly sponsored by:

MIDDLE SCHOOL NEWS: from Room 11:

Kia ora koutou,

Room 11 have been working on Tu Tangata (Identity) through learning and sharing our mihi, creating pop inspired self-portraits and writing our autobiographical poems.

An autobiographical poem is a descriptive poem written about yourself. Students thought carefully about how they would describe their own personality and interests to others. We hope you enjoy them!

Nga manaakitanga Room 11



Pop Art inspired self portraits by Room 11 students.

Who we are

creative, kind, chatty, brave, rambunctious,
 helpful, curious, tired, determined, supportive,
 respectful, independent, unique, funny, calm,
 loud, weird, resilient, aware, honest, proud,
 fast, engaged, hilarious and loved.

MANA POTENTIAL at Kaitaia Primary School (Managing my own emotions)

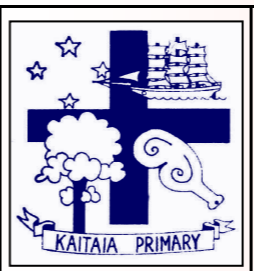
Mana – uniqueness, culture, Whakapapa, creativity, spirituality, gifts and talents, goals, taonga tuku iho.

Rongomātāne Peaceful and happy, engaged	Māui-tikitiki Becoming unsettled, having some difficulties	Rūamoko Agitated and upset	Tūmatauenga Angry, melting down, not coping	Tāwhirimātea Seeking help to reset myself	Tāngaroa Taking action to restore myself to Papatūānuku.
---	--	--------------------------------------	---	---	--



Who are my Go To people right now?	Where are my Go To places right now?	What is my Go To phrase right now?	What activity can I do right now?	How can I show aroha for others and myself right now?	What skills do I currently have?
---	---	---	--	---	---

Papātuanuku
 It's my job to get myself back to **Rongomatane** or down to **Tangaroa**.
 It's also my job to let others know how they can support me right now.
 What can I do to get myself back to **Rongomatane**?
 What can others do for me right now?
 What can I do to get myself down from **Tūmatauenga** to **Tangaroa**?



Kaitaia Primary School
 Kia Ngawari (Be Kind)
 5 Church Road, Kaitaia 0410. Ph. 09 408 0228
 Email: kaitaiaps@xtra.co.nz
 www.facebook.com/kaitaiaprimary
 www.kaitaiaprimary.school.nz

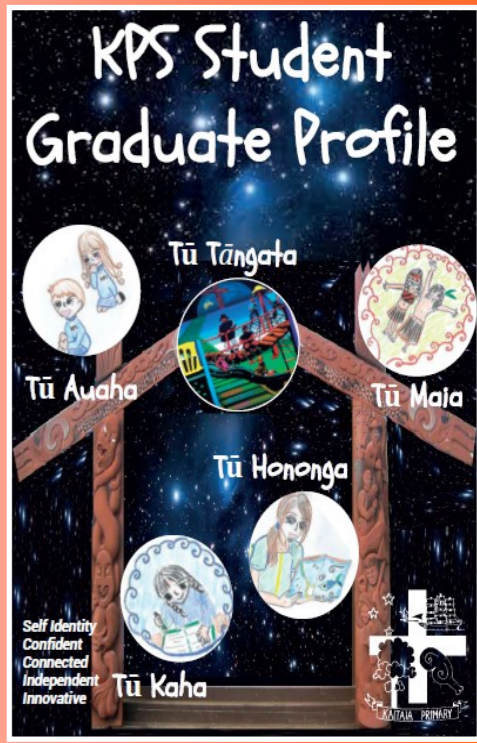
OUR VISION
 "Inspired and resourceful learners for life."
 "Kia whakaara kia manawanui mo tona ao"
 Thursday 9th June, 2022 (Term 2, Week 6)

Kia ora whanau!

A special mention about our Study Centre this week whanau. We have about 6 spaces available for new students to be part of this group. Study Centre operates out of Room 10 every Monday, Tuesday and Friday from 3pm to 5pm, during the school term. All of our students in Study Centre are given extra tuition from trained teachers (Mr M, Mrs T from Room 9 and Matua Corey) in Handwriting, Spelling, Reading Comprehension and Times Tables in Maths. We are also starting a NZ Histories project this term about The Migration Story - how Polynesia was discovered by the early Polynesian explorers. We welcome parents/caregivers to come along and see their child's progress at Study Centre. It really does give our students a boost in learning in key areas of the curriculum. Registration forms are available from our school office.

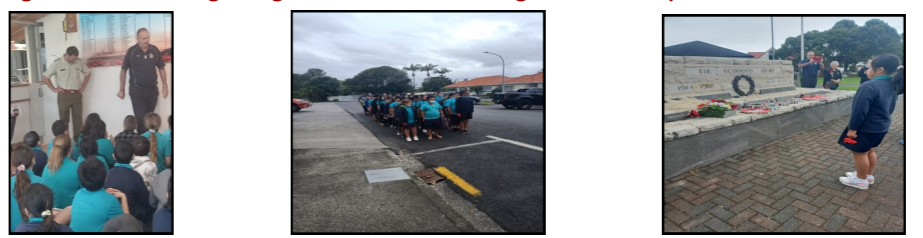
Our Matariki celebration week is fast approaching. We welcome all whanau who wish to pop into our school and be part of the fun activities teachers have planned for the week. A programme is attached inside this newsletter.

Nga mihi
 Mr M

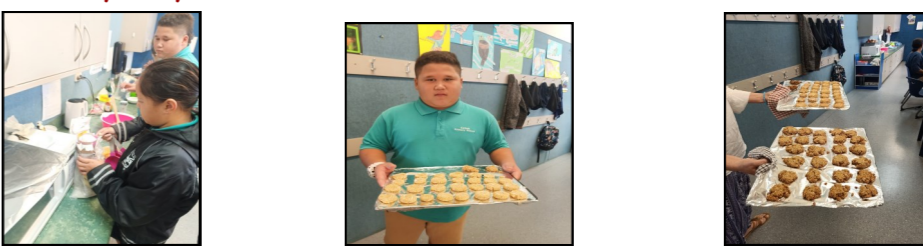


SENIOR SCHOOL NEWS: from Room 21:

It has been crazy busy in Room 21 this Term!
 We hit the ground running in Term 2, beginning with commemorating ANZAC Day at the RSA then to the Cenotaph.



We attempted to make original and healthy versions of ANZAC biscuits. Unfortunately, they weren't very tasty!



Matariki was next on our radar! We completed our Matariki unit, learning about each constellation in google slides, based a diorama on a star of our choice, and at the moment we are completing pinch pots and playing traditional Maori games!

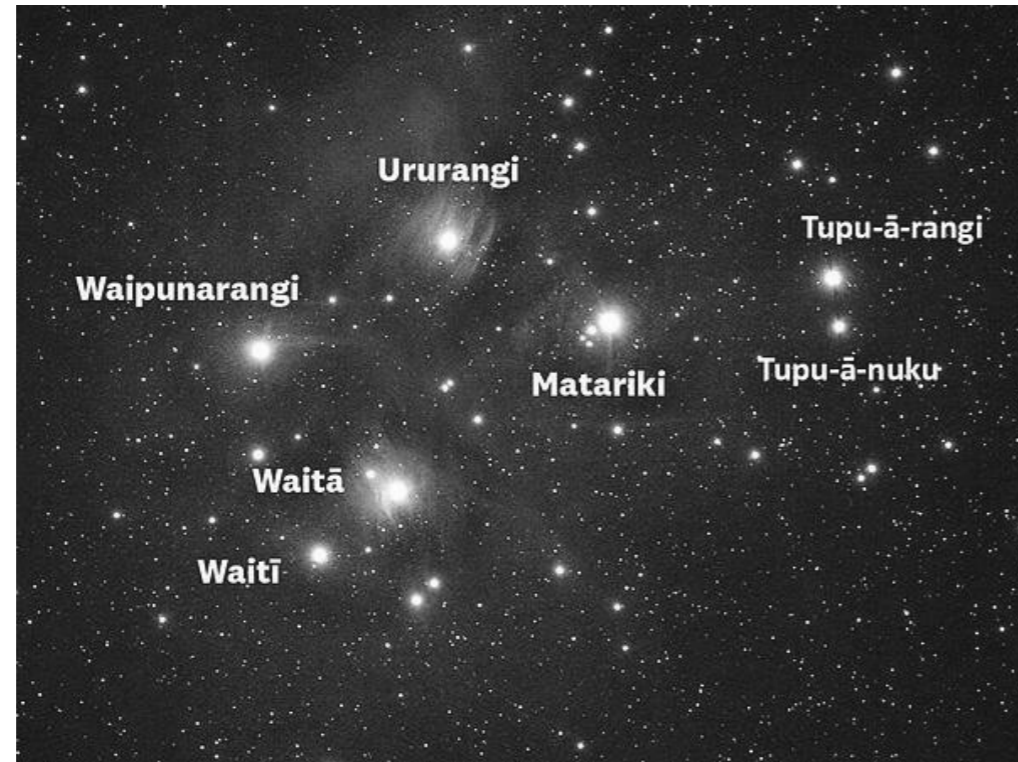


Whew! See told you we were busy!



Community Notices

Matariki Celebration Week at KPS
20-23rd June, 2022



This year at Kaitaia Primary School (KPS) we are planning to celebrate Matariki with a full week of activities. Whanau are invited to come along, take part and have fun with our tamariki as we celebrate Matariki at school this year.

There will be many fun, whanau challenges on offer including “The Great Blast-Off Challenge” where your best home-made kites, rockets and planes will be tested and celebrated by all.

Watch this space for more info to come.....

TO CELEBRATE MATARIKI
THE ALL BLACKS ARE COMING TO NORTHLAND!

WHERE: Kerikeri Rugby Club
WHEN: Matariki Friday 24 June
TIME: 9.00am – 11.30am



COME ALONG AND SEE THE TEAM!

ALL BLACKS®

Calendar of Upcoming Events

WHEN	WHAT
Every Friday 9.45am—10.20am	We will have whole school Assemblies in our Hall every Friday between 9.45am and 10.20am. Parents/Caregivers are welcome to attend.
Banking 8.30a.m.	Every Friday – ASB only. Please contact the school office if your child would like to start school banking. It is a great way to teach them to save.
10 June	Whole school assembly in our Hall from 9.45am—10.20am
17 June	Whole school assembly in our Hall from 9.45am—10.20am
20-23 June	Matariki week celebrations at KPS
24 June	Matariki Holiday - no school today and the All Blacks are in Kerikeri
29 June	BOT meeting at 5.15pm
6 July	Mid-Year school reports come home today
8 July	Last day of Term 2

Have a safe and happy holiday break everybody!
From the children, staff and BOT of Kaitaia Primary School.

