



Kaitaia Primary School is proudly sponsored by:

Brakes ColourPlus

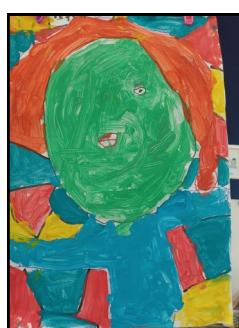
* PAINT * WALLPAPER * BLINDS * CURTAINS *
DULUX * JACOBSEN * TOOLS & ACCESS
For all your decorating needs.
Pop in and see us.
224 Commerce Street, Kaitaia
Phone/Fax: 09 408 1741

JUNIOR SCHOOL NEWS FROM ROOM 3:

Wow! Room 3 has had a busy and exciting Term 4. We have been learning about Keeping Ourselves Safe when we are at home or out and about. A recent highlight for Room 3 was the Fire Brigade visit as part of our Firewise learning. We practised what to do if there is a fire and where to go to be safe.



We have been learning about emotions. Our Mana Potential Programme is helping us to work out what things make us happy, sad, worried or angry. We can talk about how we feel. We have made some beautiful artworks about this. Below are some portrait paintings that we did. Also below, are some photos of Room 3 children enjoying activities at school. School is a great place to learn new things, explore and share with friends.



MANA POTENTIAL at Kaitaia Primary School (Managing my own emotions)

Mana – uniqueness, culture, Whakapapa, creativity, spirituality, gifts and talents, goals, taonga tuku iho.

Rongomātāne
Peaceful and happy, engaged

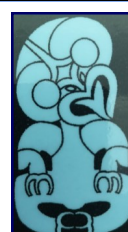
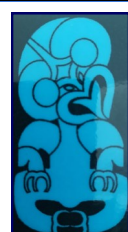
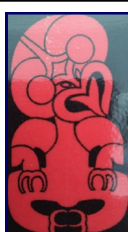
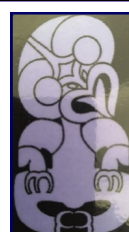
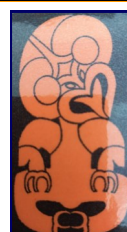
Māui-tikitiki
Becoming unsettled, having some difficulties

Rūamoko
Agitated and upset

Tūmatauenga
Angry, melting down, not coping

Tāwhirimātea
Seeking help to reset myself

Tāngaroa
Taking action to restore myself to Papatūānuku.



Who are my **Go To** people right now?

Where are my **Go To** places right now?

What is my **Go To** phrase right now?

What **activity** can I do right now?

How can I **show aroha** for others and **myself** right now?

What **skills** do I currently have?

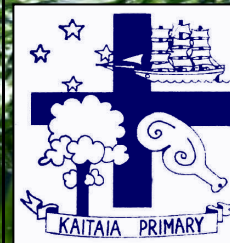
Papatūānuku

It's my job to get myself back to **Rongomātāne** or down to **Tāngaroa**. It's also my job to let others know how they can support me right now.

What can I do to get myself back to **Rongomātāne**?

What can others do for me right now?

What can I do to get myself down from **Tūmatauenga** to **Tāngaroa**?



Kaitaia Primary School

Kia Ngawari (Be Kind)

5 Church Road, Kaitaia 0410. Ph. 09 408 0228
Email: kaitaiaps@xtra.co.nz
www.facebook.com/kaitaiaprimary
www.kaitaiaprimary.school.nz

OUR VISION

"Inspired and resourceful learners for life."
"Kia whakaara kia manawanui mo tona ao"

Thursday 8th December, 2022 (Term 4, Week 8)

Kia ora whanau!

This is the final school newsletter for 2022. I would like to thank all of our tamariki, whanau, staff, BOT and the wider Kaitaia Primary School community for helping us to get through another successful year at KPS. I'd especially like to thank the Senior Management Team (Mrs Stevenson, Ms Burnage and Mrs Patrick) for supporting me with all the "unseen" organisation stuff that needs to be done every year. Also, special thanks from me to Mrs Morrissey for again, keeping me sane during the tough times this year.

I am going to be working for the Ministry of Education in 2023 whanau. Mrs Stevenson will be Acting Principal in my place for the year. Please support her as you have supported me. It's not an easy job and can be a lonely one at times. I will resume work at KPS in 2024.

Finally, I wish everyone a very happy holiday break. May it be filled with love and laughter for you all.

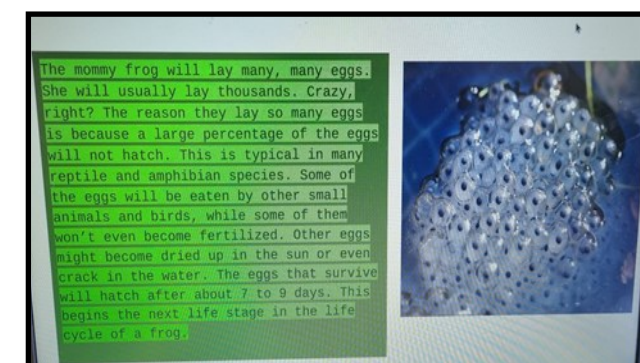
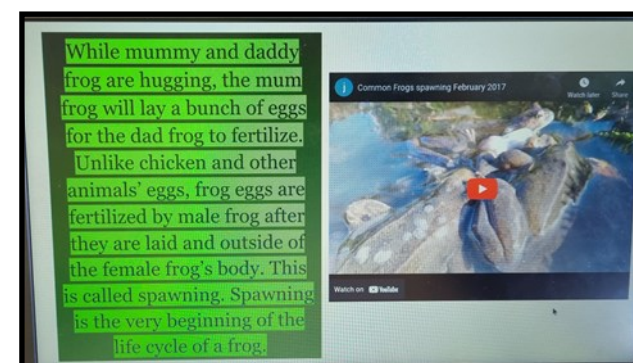
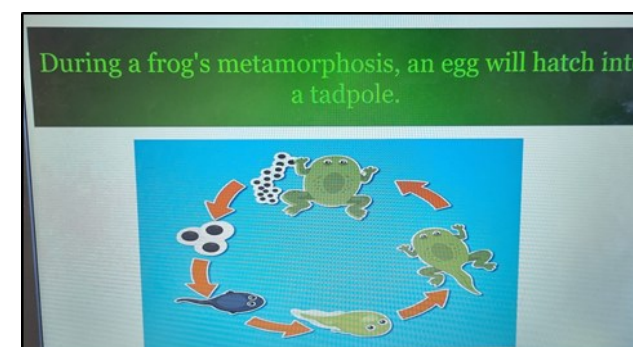
Nga mihi
Mr M

KPS Student Graduate Profile



SENIOR SCHOOL NEWS FROM ROOM 13:

Room 13 have been looking after some tadpoles so we have been learning about the life cycle of a frog and making slide shows. Here are some pics of some of our slides.





School Notices

Last day of School—Bus Notice

Buses not running from Monday 12th December will be College Shuttle , Town 2 and Town 3 out of town areas: Awanui, Kumi Road, Bells Road, Kaingaroa and Donalds Road. The last day for these bus runs is the afternoon on Friday 9th December.

Thursday 15th December is our last day for school.

Our Town Buses will leave our school at 1pm. Children who walk or are collected will be released at 12.45pm. There will be no supervision of any children, including those who go to Skools Out from 12.45pm until they start there at 3pm.

Our full bus runs for all of the above areas starts on Tuesday 31st January 2023.

Kind regards,
Brendon Morrissey



MANAWA AWARDS FOR THIS WEEK



Tū meke nga tamariki!

Calendar of Upcoming Events

WHEN	WHAT
9 December	Kaitaia Primary School Prize Giving + end of year school reports go home today.
12 December	Phonebook delivery ends today
15 December	Last day of school at KPS. School ends at 1pm today.
23-27 January 2023	School office is open for new enrolments daily from 9am to 3pm
Monday 30 January 2023	Northland Anniversary Day Holiday
Tuesday 31 January 2023	First day of school for our tamariki in 2023

Have a safe and happy weekend everybody!
From the children, staff and BOT of Kaitaia Primary School.

