



Kaitaia Primary School is proudly sponsored by:

Brakes ColourPlus

* PAINT * WALLPAPER * BLINDS * CURTAINS *
DULUX * JACOBSEN * TOOLS & ACCESS
For all your decorating needs.
Pop in and see us.
224 Commerce Street, Kaitaia
Phone/Fax: 09 408 1741

JUNIOR SYNDICATE NEWS FROM ROOM 18:

Mauri ora! Nau mai, piki mai, kake mai!

It has been awesome being back at Kura and working on class projects. Our first mission was to catch up on what everyone had been doing while being safe at home. We decided to write and paint our stories. Then with the help of our Tamariki we made a room 18 safety plan. We had lots of good ideas on how to keep our class bubble as safe as possible.



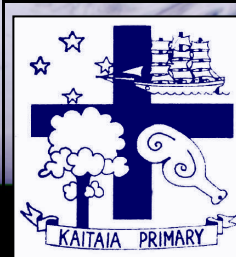
We read a story about Felix who was a Super Kid because he stayed home and helped save lives. Just like us.



This is Thistle Mountain Village. We did some drama and painting about facing our fears and problem solving.



Noho ora mai
Room 18 & Whaea Rere



Kaitaia Primary School

Kia Ngawari (Be Kind)

5 Church Road, Kaitaia 0410. Ph. 09 408 0228
Email: kaitaiaps@xtra.co.nz
www.facebook.com/kaitaiaprimary
www.kaitaiaprimarieschool.nz

OUR VISION

"Inspired and resourceful learners for life."
"Kia whakaara kia manawanui mo tona ao"

Thursday 4th June, 2020 (Term 2, Week 8)

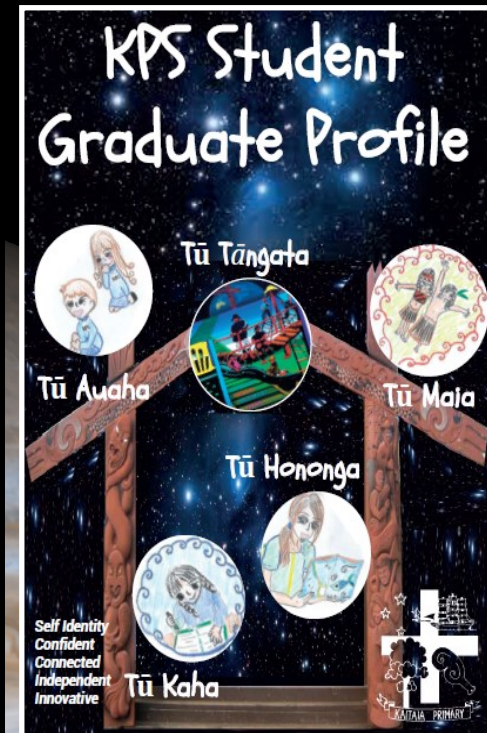
Kia ora koutou!

It's been a very good first few weeks at school back in the classroom. Much like the start of the year, we are re-establishing relationships and going over our class routines, old and new. We have done a lot of talking about washing our hands throughout the day. We feel safe and happy to get back to a bit of "normal".

Don't forget, the MOE has instructed schools to mark children as absent unless a medical certificate is provided to say that they should work from home for a while longer. The medical certificate may be for a member of the household who has health issues and needs to be kept safe at this time. The 20 day absentee rule still applies to schools and a student will come off our school roll unless a medical certificate has been supplied to our office. Sorry whanau but those are the rules we have to follow at this time.

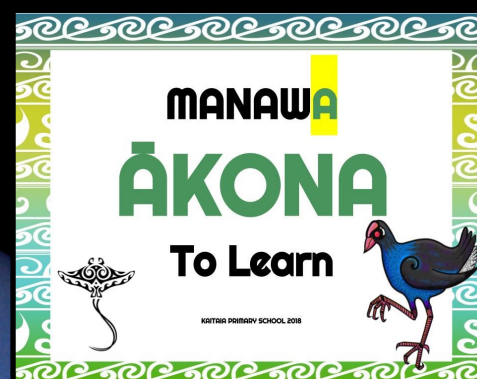
We have been steadily collecting in chromebooks, which were sent out to students during the lockdown period recently. Now that we are back at school, the chromebooks need to be brought in to our school office. We are checking them off each day and as they come in our students are able to see me for a prize from my prize-box. These chromebooks belong to our school and will be used by our tamariki at school. If we go back into lockdown again, I have a list of students they will be able to go to so they can access learning online.

Ka kite,
Brendon Morrissey



SENIOR SYNDICATE NEWS FROM ROOM 19:

Room 19 has enjoyed working toward completion of our Geometry unit for this term. We have created shapes and patterns. In the playground we have learned about Direction. All of these have been achieved by incorporating our Schools Values of Tu Hononga - Connected and interacting positively with others as well as Tu Maia - students Confidently talking about their learning.





School Notices

Te Manawa Tahī

Are you worried about your child's learning, or their behaviour at their school or early childhood centre?

- Does your child have difficulty speaking, hearing or learning?
- Managing their behaviour or getting on with others?
- Seeing properly, or have other unmet needs or difference that set them apart from others?

These things can affect their progress and wellbeing.

Te Manawa Tahī is a learning support hub, held at the school, where you can come and talk to education professionals (RTLs, Learning Support) about your child's learning needs. It is a free service.

Look for our flag flying outside Kaitaia Primary School on 11 June from 10:30am to 2:30pm.

All are welcome, no appointment needed.

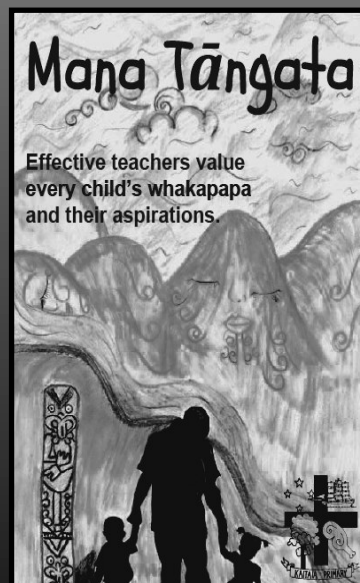
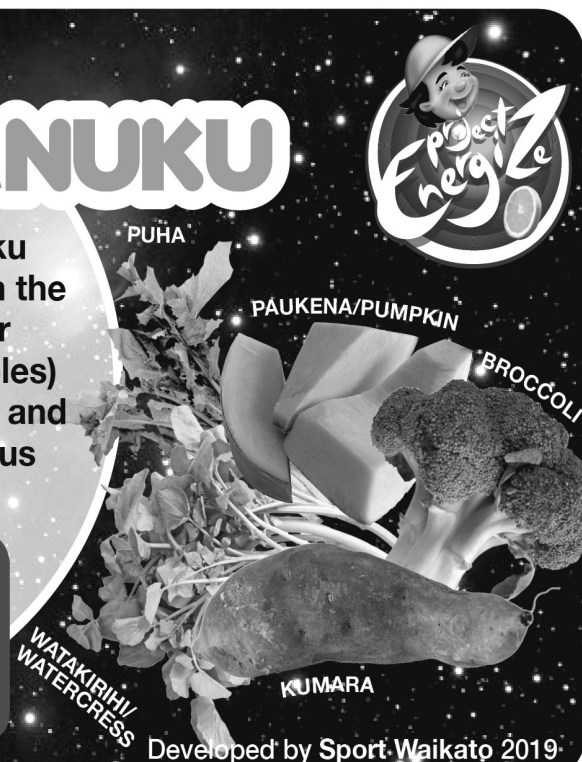
Check out our Facebook Page "Te Manawa Tahī o Te Hiku" or call us on 0800 5248 4256 to talk.

Tony Hassan
Te Manawa Tahī Facilitator"

MATARIKI

The star of Tupuanuku represents food from the ground which are our huawhenua (vegetables) that give us vitamins and minerals which help us to GLOW.

TIP: Eat a uenuku (rainbow) of different colours for a variety of different vitamins & minerals.



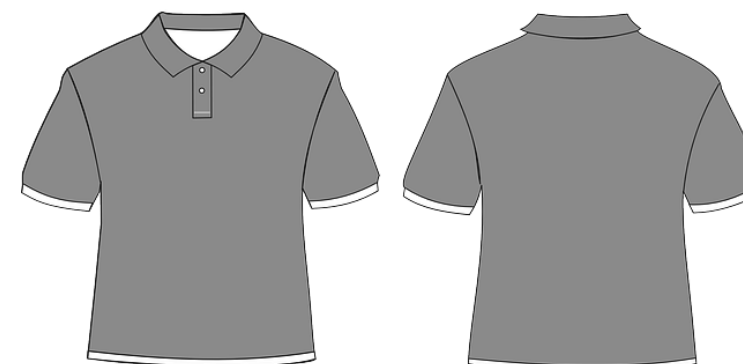
School Notices

School office notices:

We have plenty of \$10 embroidered Kaitaia Primary School uniform Polos sizes 4 to 16 available at the office. Cash only please! All other uniform items are available at The Warehouse, Kaitaia - embroidered navy sweatshirts and anything (except jeans) navy or black on the bottom!. So good to be back at school!

\$5 Friday fundraisers will start again on Friday 5th June (tomorrow!).

Thank you,
Mrs Patrick



Calendar of Upcoming Events

WHEN	WHAT
Every Wednesday Once school resumes	Public Health Nurse attends our school. If you would like a private consultation with our Public Health Nurse, on Wednesday please telephone the school and we will endeavour to arrange this for you. This service is free.
Banking 8.30a.m. Once school resumes	Every Friday – ASB only. Please contact the school office if your child would like to start school banking. It is a great way to teach them to save.
Friday Fundraiser = Every Friday Restarts 5th June	Our tuck shop will not be open this year but we will have a Friday Fundraiser combo for \$5. Order forms for this will be sent home at the start of each week.
Every Friday	School assembly will resume once the restrictions around crowd gatherings are lifted. Watch this space!
Throughout Term 2 Once school resumes	iMOKO check ups (Whaea Alice and Whaea Bonnie) in our school during the morning checking for infectious skin disorders and head lice. Free treatment is provided for all children.
11 June	Te Manawa Tahī @ KPS from 10.30am - 2.30pm
18 June	Newsletter via KPS Facebook Page and hardcopy home
22 June	BOT meeting @ 5.30pm
2 July	Newsletter via KPS Facebook Page and hardcopy home
3 July	Last day of Term 2
20 July	Term 3 begins
24 July	School Assembly @ 9.45am in our Hall

Have a great weekend everybody!
From the children, staff and BOT of Kaitaia Primary School.

