



JUNIOR SYNDICATE NEWS FROM ROOM 4:

Room 4 have spent time getting to know one another and learning class routines and the expectations we decided on for our class treaty.



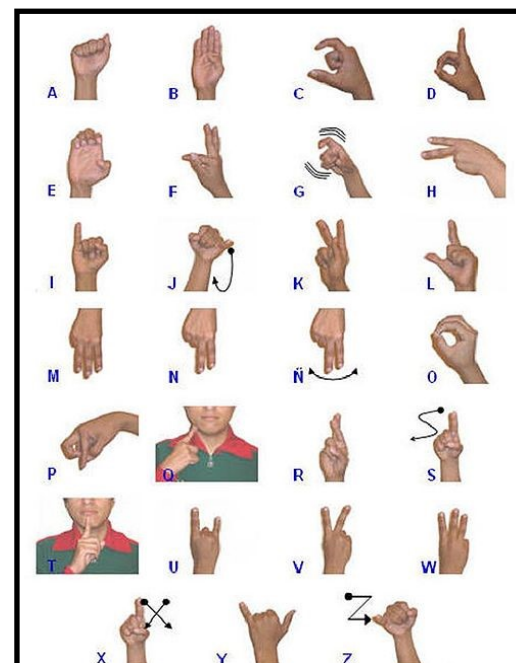
Did you know that New Zealand Sign Language is one of the official languages of our country? This term we have been fortunate to have had Alana Best from Deaf Education New Zealand working with us in Room 4. We have learned sign language for some of our big books and poems and she also shared a picture book story of her own with us.

We have really enjoyed our afternoon swims in the school pool and will be sad to see the end of swimming this term.

We all especially enjoyed our Junior School trip to the town pools last week.



We have had fun constructing and creating with blocks and cardboard.



Please show your support for the following sponsors who have taken time to support us.

This advertising space is available to a local business who wishes to utilise this service.

If you are keen to take up this opportunity, please contact Mrs Sharon Patrick at our school office.

Ph: 09 4080228

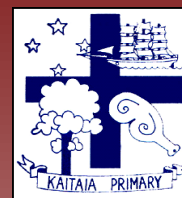
Email: accounts@kaitaiaprimarieschool.nz

Brakes ColourPlus

* PAINT * WALLPAPER * BLINDS
* CURTAINS * DULUX
* JACOBSEN * TOOLS & ACCESS
- For all your decorating needs.

Pop in and see us.

224 Commerce Street, Kaitaia
Phone/Fax: 09 408 1741



Kaitaia Primary School

5 Church Road, Kaitaia 0410. Ph. 09 408 0228
Fax. 09 408 2361 Email: kaitaiaps@xtra.co.nz

OUR VISION

"Inspired and resourceful learners for life."
"Kia whakaara kia manawanui mo tona ao"

Thursday 7th March, 2019 (Term 1, Week 46)

Kia ora koutou!

Thanks everyone for another wonderful week at Kaitaia Primary School. A special thanks this week from me to all our parents/caregivers who supported our Junior and Senior school events at the town pools. Both events were awesome and our kids had lots of fun showing off what they have learnt in their swimming lessons this year. Our Senior school event was brilliant, with lots of laughter and a bit of controversy in the Staff vs Student race. I actually disqualified the staff relay teams 17 times during the race. I'm not sure if that's any sort of national record, but it probably should be. It was so funny and all involved thought it was a great addition to the programme.

The Tomorrows School Review survey is still going until 31st March. This is a chance for everyone to have their say about the proposed changes outlined by the independent review panel. If you haven't done an online survey yourself yet, just put the words "Tomorrows Schools Review survey" into a Google search and you will get to the link you need.

Finally, to our whanau in Christchurch, Kia kaha! Our hearts are with you!

Ka kite,
Brendon Morrissey



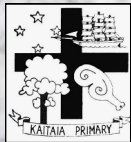
SENIOR SYNDICATE NEWS FROM ROOM 12:

The focus for Rm12 this year is one of discovery – finding out who we are and how this understanding of identity helps strengthen our mana and acts as a compass as we move forward in life.

We are starting by investigating our whakapapa and developing our pepeha.

We hope to meet in whanau homes and have parents share their whakapapa and answer the three questions; Am I proud to be Maori? What does being Maori mean? What am I doing to demonstrate this each day?





Kaitaia Primary School Newsletter

School and Community Notices



Our Whare Marino and world symbolize our commitment to Bilingual Education and our belief that the learning journey for our children continues out into the wider world and maybe beyond



Symbolizes our Mission to nurture our children along with their learning



Our stairway symbolizes setting and achieving goals in our learning step by step

DRINKS

ENERGY DRINKS

Energy drinks contain large amounts of sugar and caffeine which provide NO goodness for our bodies. These drinks are NOT recommended for children.

Developed by Sport Waikato 2019

Bus Reminder

To all parents/caregivers of children from Kaitaia Primary School, I need your help please!

Our bus stops in the morning and afternoon are places where many of our children gather in order to get to and from school each day. Sometimes our children need our guidance to make good and safe choices while they await the bus and also while they make their way home.

In light of a few recent issues at our bus stops, I am asking for help. If you can at any stage make some time to help monitor a bus stop where your child gets on and off the bus, please do so. Some of our children at the moment need our help to remember that we all have a responsibility to be safe and to look after others. This is what our Core Values of MANAWA are all about.

As always, thank you for your support with this.

Mr M

School and Community Notices



MANAWA AWARDS

Well done to our Manawa award recipients last week. Great to see lots of kids out there doing good for others because they want to, not because they were told. Ka pai koutou!



Calendar of Upcoming Events

WHEN	WHAT
Every Wednesday	Public Health Nurse attends our school. If you would like a private consultation with our Public Health Nurse, on Tuesday please telephone the school and we will endeavour to arrange this for you. This service is free.
Banking 8.30a.m.	Every Friday – ASB only. Please contact the school office if your child would like to start school banking. It is a great way to teach them to save.
Friday Fundraiser = Every Friday	Our tuck shop will not be open this year but we will have a Friday Fundraiser combo for \$4. Order forms for this will be sent home at the start of each week.
Every Friday	School assembly at 9.30a.m. for Term 1 in our School Hall - all whanau welcome!
Throughout Term 1	iMOKO check ups (Whaea Alice and Mr Morrissey) in our school during the morning checking for sore throats, infectious skin disorders and head lice. Free treatment is provided for all children.
28 March	Duffy Role Model assembly @ 11.30am in our school Hall
9 April	Hearing and Vision testing for Y1 and special requests
12 April	End of Term 1
29 April	Start of Term 2

Have a great weekend everybody!
From the children, staff and BOT of Kaitaia Primary School.



Our children at play on the Inquiry Learning Playground which symbolizes our commitment to developing the explorers and researchers of the future.